



M1 PRO / M1 PRO DHC/ M3 PRO Electric Trolley
Instruction Manual

REGISTER ONLINE
www.motocaddy.com/warranty

Locating your Serial Number / Information about DHC

Locating your Serial Number

The serial number for your M-Series trolley is located on the inside of the Device cradle compartment. This number is required when registering your warranty online and should be kept handy for future use.

The same number should also be on the box received with your trolley. Please ensure you keep hold of the packaging in case you need to return your trolley for any reason. A proof of purchase must also be kept in case your trolley requires servicing during its warranty period.

Please keep a record of your trolley serial number here for future reference

M	C	M												
---	---	---	--	--	--	--	--	--	--	--	--	--	--	--

Information about DHC (Downhill Control) models

The information in this instruction manual applies to both standard and DHC electric trolley models. For DHC specific functionality, please turn to page 30.

Battery Care and Advice

All batteries must be charged as soon as possible after each use. Leaving batteries discharged for long periods of time will affect the battery life.

Please ensure that only batteries supplied by Motocaddy are charged with Motocaddy chargers. Cyclic battery chargers are designed specifically in accordance with the battery manufacturer's requirements. The Lithium battery charger MUST NOT be used to charge any other battery and is designed for use with Motocaddy Lithium batteries only.

The charger should only be connected to an earthed socket outlet; the battery charger should only be opened and maintained by authorised personnel. Unauthorised opening will invalidate your warranty.

The battery must be stored and charged on a dry non-carpeted surface and charged at temperatures ranging between 10°C and 30°C. Charging above or below these temperatures is not recommended as it can reduce the battery capacity.

When connecting your battery to the trolley, please ensure that the connections match up black to black and blue/red to blue depending on your battery type.

Charging your Lead-acid Battery

Charging your Lead-acid Battery

1. Disconnect and remove the battery from the trolley
2. Plug the charger into your mains supply
3. Attach the battery cable to the charger matching the red and black connections
4. Follow the charger LED indicator stages shown below:



5. Once charging is complete please disconnect the charger from the mains power supply
6. Finally disconnect the charger from the battery

NB : Never charge the battery outside or in conditions that may allow moisture to penetrate the charger or connections. If the battery is not used for prolonged periods of time, please charge your battery at regular intervals (every 6 weeks). Please do not leave it on charge or connected to the charger.

The battery should be charged for at least 12 hours before using it for the first time, please be aware that the charger can take up to a further 8 hours to show fully charged once the battery has reached 90% charge.

Charging your Lithium Battery

1. Unplug the Lithium battery from the trolley. This should always be performed before folding the trolley to avoid damage to the battery and/or trolley
2. Plug the charger into your mains supply
3. Attach the battery cable to the charger matching the black and blue connections
4. When the charging LED indicator has turned green, the battery is fully charged and ready to be used

 RED - Battery Charging   GREEN - Battery fully charged and ready to be disconnected

5. The charging process will take between 3 to 5 hours depending on the depth of discharge (please be aware that this may take longer for the first few charges)
6. Once charging is complete please disconnect the charger from the mains power supply
7. Finally disconnect the charger from the battery

Caring for your Lithium Battery

- Try to avoid getting the battery too wet (i.e. do not submerge the battery, avoid deep puddles and do not clean your trolley whilst battery is still in the battery tray)
- Dropping the battery may cause damage to the internal cells
- Do not lift or carry the battery by the cable
- Use a damp cloth to clean off any dirt

Recommendations for the hibernation of Lithium batteries during Winter months

If for any reason your Lithium battery is not going to be used for lengthy periods, e.g. 3 months over the winter, it is advised to store the battery half charged. To do this simply use the battery for a round of golf as usual and charge it for 1.5 hours at the end of the round. Before the battery is used again, recharge it (top it up) prior to use. We recognise that extended absences are not always planned in advance, however when it is likely that you will not be using your battery for a period of time it is good practice to follow these steps to extend the life of your Lithium battery. Please ensure that the charger is ALWAYS disconnected from the battery after charging.

Battery Management System (BMS)

Motocaddy Lithium batteries are fitted with a comprehensive battery management system (BMS) to protect the battery from excessive abuse, high currents, deep discharge and overcharge. When the battery is delivered there may be no output as the BMS is designed to maximize safety whilst shipping. Please ensure that the battery is fully charged prior to connecting it to your trolley as this will activate the BMS and effectively 'switch-on' the battery. From time to time, at deep discharge or long term storage the BMS may switch-off the battery. A full battery charge will rectify this problem.

Motocaddy golf trolleys are designed to work with the BMS system installed in the Lithium batteries and the voltage meter is also synchronised to work in conjunction with the battery. If for any reason the voltage on the battery falls below the low battery warning on the trolley, then the BMS may disable the battery to protect it. Again if this occurs please recharge fully. Please be aware that Lithium batteries tend to 'drop off' quickly at the end of the cycle so it is not advisable to attempt to play excessive holes as the BMS will activate for protection purposes.

Unfolding your Trolley

1. Place trolley in upright position (fig. 1)
2. Release CLIP 1 (fig. 2) and push front wheel away from trolley until it is fully extended and trolley is flat
3. Ensure CLIP 1 clicks into place to lock front wheel in extended position
4. Pull CLIP 2 outwards to release (fig. 3)
5. Unfold handle towards front wheel and re-secure CLIP 2 to lock
6. Pull out CLIP 3 and rotate anti-clockwise to unlock (fig. 4)
7. Unfold wishbone into upright position
8. Pull bag supports upwards to release CLIP 4 (fig. 5), lift frame and unfold fully
9. Connect frame to wishbone (fig. 6) and click CLIP 5 into position to lock
10. Adjust upper bag supports ready for use



Fig 1



Fig 2



Fig 3



Fig 4



Fig 5



Fig 6

Folding your Trolley

Folding your Trolley

1. Fold back upper bag supports (fig. 1)
2. Pull CLIP 5 upwards to release (fig. 2) and move wishbone towards ground
3. Fold frame in half and push handle towards front wheel
4. Lift bag supports slightly and lock CLIP 4 into position
5. Pull out CLIP 3 and rotate clockwise to lock hinge into place (fig. 3)
6. Fold wishbone towards front wheel
7. Pull CLIP 2 outwards to release (fig. 4)
8. Fold handle towards battery tray and re-secure CLIP 2 to lock
9. Release CLIP 1 (fig. 5) and use carry handle to lift the trolley into the upright position (fig. 6)
10. Push front wheel towards battery tray and click CLIP 1 into place to secure



Fig 1



Fig 2



Fig 3



Fig 4



Fig 5



Fig 6

Attaching the Wheels

There is a left and a right wheel and it is important that you don't put them on the wrong way round, otherwise the trolley will not move. You will find there are an "L" and "R" on the inside of the wheel on the central hub. Left and Right sides are determined when stood behind the trolley.

NB : DHC trolley models do not have a specific left and right wheel.

To attach the wheels follow these simple steps:

1. Push the quick release button in towards the centre of the wheel
2. Slide the wheel on as far as it will go (onto the inner groove)
3. Once in place, release the button and pull the wheel outwards slightly to lock in place
4. A small click will confirm they are in the correct position

The outer groove can be used as a "free-wheel" option if you run out of battery power during a round of golf.

IMPORTANT : To check you have attached the wheels correctly onto the inner groove, you will find they will only rotate freely in one direction. (This does not apply with DHC models)



Using the Upper and Lower Bag Supports

Using the Upper Bag Supports

The upper bag support straps are secured using the following steps:

1. Stretch the elasticated strap around the bag & loop the rounded bar underneath the hook (fig. 1)
2. Position the two placement straps centrally on your golf bag (fig. 2)

Using the Lower Bag Supports

This Motocaddy trolley is fitted with the EASILOCK™ bag attachment system. If you are using an EASILOCK™ compatible golf bag please follow these simple instructions:

1. Remove the two pre-fitted lower bag straps by depressing the rear button and sliding (fig. 3)
2. Match up the indicating line on the golf bag with the line on the lower bag support
3. Lower the bag until the pins lock in position. You should hear a small click

If you are using a non-EASILOCK™ golf bag, please use the following instructions:

1. Stretch the lower bag strap around the bag base & loop the rounded bar underneath the hook
2. Position the two placement straps centrally on the base of your golf bag

Please ensure all straps are hooked securely before releasing. Failure to do so could result in injury.



Fig 1



Fig 2



Fig 3

Adjusting the Bag Supports

The bag support straps are manufactured from elasticated material to allow your golf bag to be held tightly in place.

The strap should be adjusted to be reasonably tight around the golf bag:

1. Unclip the elasticated straps from the housing by pulling outwards in the direction shown (fig. 1)
2. Move the bar as required to tighten or loosen the strap fitting. Pulling the bar downwards will tighten, pushing it upwards will loosen (fig. 2)
3. Ensure that the straps are clipped back into the housing before use (fig. 3)



Fig 1



Fig 2



Fig 3

Safety Cut-out / Safe use of your Trolley

Safety Cut-out

This Motocaddy trolley is fitted with a safety cut out feature which will help prevent damage to your trolley in the event of it being inadvertently switched on and in a position where it is not able to move for 30 seconds. If this should occur, the trolley will automatically cut the power to the motor.

If your trolley has cut out for this reason you will see the following on the display:

- For an M1 PRO the LED panel will display an “L” where the speed setting would usually be shown and the left hand LED will still be lit (fig. 1)
- For an M3 PRO the screen will flash “LOAD” where the distance would usually be displayed and the blue circle will still be rotating (fig. 2)

Pressing the on/off button will reset your trolley.

Safe use of your Trolley

Your Motocaddy trolley is designed for the transportation of golf bags and clubs contained within. Using the trolley for any other reason may cause damage to the trolley and cause harm to the user.

- Do not attempt to transport any other equipment
- The trolley is not designed for the transportation of people
- Do not use the trolley to assist you when going up hills



Fig 1



Fig 2

- Submerging the trolley in water (e.g. a lake) is likely to cause damage to the trolley
- Do not operate the trolley whilst under the influence of drugs or excessive amounts of alcohol
- All batteries must be disconnected from the trolley before transporting
- Lead-acid batteries must be removed from the battery tray before transporting your trolley
- Always use the carry strap when moving and transporting Lead-acid batteries

Caring for your Trolley

Although your Motocaddy Trolley has been weatherproofed, please follow these simple guidelines to help protect your trolley:

- Do not store your trolley outside
- Try to minimise exposure to rain as much as possible with an umbrella during heavy rainfall
- Wipe excess water from the trolley prior to storage
- Never use a pressure washer to clean your trolley. To prevent water damage, wipe down with a damp cloth
- Avoid using high pressure air hoses near moving components

Your Motocaddy trolley is designed to require very little maintenance. We do however recommend giving your trolley regular checks to ensure:

- There is no build up of excess mud and dirt
- The front wheel nut is on tightly and quick release lever is clamped down
- The front wheel is not clogged up and turns freely
- The battery bag and strap are intact and not damaged (Lead-acid batteries only)

Only original Motocaddy parts should be used when repairing your trolley.

Using the Device Cradle / USB Charging Port

Using your Device Cradle

1. Lift the cover of the device cradle compartment to expose the cradle (fig.1-1)
2. Press the button on the top of the cradle to increase the width of the arms (fig.1-2)
3. Push arms together to clamp tight on to the device (fig.1-3)

Using the USB Charging Port

To use the USB charging port simply lift the cover on the device cradle compartment and plug a USB cable in to the charging socket.

The device will continue charging for the duration of time that the cable is attached and the battery is connected.

It is important to note that the speed of charge will be slower than that of a mains AC charger and similar to plugging the device into a PC.

The USB charger takes power from the main trolley battery and continuous charging will reduce the battery capacity between charges. The trolley is designed to disable the USB port when the battery capacity reaches a preset level.

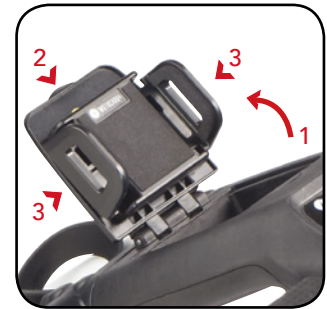


Fig 1

Adjusting the Front Wheel Alignment if your trolley is veering

In the unlikely event that your trolley is not tracking in a straight line, the alignment of the front wheel can be adjusted to rectify the fault. This problem can be caused by a number of factors including a slightly loose bag support or an unevenly packed golf bag. Should you wish to alter the alignment of the front wheel, follow these simple steps:

1. Lift the quick release lever positioned on the front wheel housing and loosen the wheel nut (fig. 1)
2. There are two small metal dials on either side of the housing that are used to realign the wheel (fig. 2)
3. If your trolley is veering to the right, you will need to turn the left hand dial clockwise and the right hand dial anti-clockwise
4. If your trolley is veering to the left, you will need to turn the right hand dial clockwise and the left hand dial anti-clockwise
5. Tighten the wheel nut and push down the lever to lock the wheel back into place (fig. 3)

This procedure can be carried out until you are happy the trolley is moving in a straight line (please note you may only need to adjust one dial at a time).

PLEASE NOTE : These instructions are based on being in front of the trolley looking at the wheel.



Fig 1



Fig 2



Fig 3

M1 PRO Equipment Overview

M1 PRO Equipment Overview

1. Digital Control Panel
2. Upper Bag Support
3. Rear Wheels
4. Rear Wheel quick release button
5. Lower Bag Support
6. Battery
7. Battery Tray
8. Motor (located under Battery Tray)
9. Front Wheel
10. Front wheel alignment adjusters
11. Battery Connector
12. USB Charging Port / Device Cradle
13. Parking Brake (DHC only)



Using your M1 PRO

The M1 PRO is extremely simple to control. There is one main button that is used to turn the trolley on and off, whilst also controlling the speed of the trolley. The speed can be adjusted while the trolley is stationary or in motion. The trolley has 9 speed settings (1 to 9) with 1 being the slowest setting and 9 the fastest. To increase the speed, rotate the speed dial clockwise, or anti-clockwise to decrease the speed.

To start the trolley, simply select your required speed setting and press the button. The trolley will smoothly accelerate until it reaches the selected speed. To stop the trolley, simply press the button again - there is no need to reduce the speed setting.

Power and Battery Level

There are two indicating LEDs below the speed display. The right hand LED displays the battery capacity (green, amber & red) and will illuminate as soon as the battery is plugged in. The left hand LED will illuminate when the power is on.

The trolley is designed to protect your battery from being fully discharged, should your battery capacity drop too low the trolley will cut the power to the motor. If this should happen you will see "b" flashing on screen.



Using the Adjustable Distance Control

The M1 PRO features a basic, easy to use adjustable distance control which will allow you to send your trolley ahead of you from 15 - 45 meters.

1. Whilst stationary select the speed that you wish to set your trolley off at
2. Hold down the on/off button for a couple of seconds, you will see the outer digits of the LED display rotate once clockwise (fig. 1) and "1" will then flash on the display (fig. 2). There are three settings for the distance, 1 = 15 meters, 2 = 30 meters and 3 = 45 meters
3. Turn the button clockwise to increase and anti-clockwise to decrease to your preferred distance
4. Press the on/off button to set the trolley off in motion. Whilst the trolley is powered using ADC, the left hand indicating LED will flash
5. The trolley can be stopped manually by pressing the button again

In the unlikely event that your trolley fails to register distance whilst in ADC mode, the trolley will cut power to the motor to prevent the trolley from travelling too far. The trolley screen will flash "E" to indicate that this safety feature has been instigated (fig. 3).

The trolley can be reset by pressing the on/off button once, thereby allowing you to continue to use the trolley with ADC disabled until you are able to contact our technical support team.



Fig 1



Fig 2



Fig 3

M3 PRO Equipment Overview

1. Digital Control Panel
2. Upper Bag Support
3. Rear Wheels
4. Rear Wheel quick release button
5. Lower Bag Support
6. Battery
7. Battery Tray
8. Motor (located under Battery Tray)
9. Front Wheel
10. Front wheel alignment adjusters
11. Battery Connector
12. USB Charging Port / Device Cradle



The Advanced Digital Control Panel / Operating the Digital Functions

The Advanced Digital Control Panel

1. Speed Setting
2. Clock
3. Round /Lost Ball Timer
4. Battery Meter
5. Battery Setting
6. Distance Reading
7. Scroll Button
8. Speed Controller & On/Off
9. Set Button

Operating the Digital Functions

To activate the control panel you need to connect the battery to the trolley. When the display activates, the speed setting number located within the blue circle will indicate the speed the trolley will set off at once started. The solid blue circle will rotate when moving.



NB : Please be aware that certain moisture, temperature and humidity conditions can result in localised misting within the display screen. This will not affect the trolley functionality, nor cause any damage and will return to normal when adverse conditions subside.

Setting the Time

1. Press and hold the "Set" button for three seconds until the "minutes" start flashing
2. Set the minutes by pressing the "Scroll" button, each press will increase the time by one minute
3. To toggle to the hour press the "Set" button again
4. Set the hour in the same way as you did the minutes
5. Once the time is correct, press and hold the "Set" button for three seconds to confirm

Battery Meter

The battery meter on the digital display is set to measure capacity of the standard battery as default. To enable accurate measurement of Lithium battery capacity, please follow the procedure below:

6. Hold down the "Scroll" button while plugging in the battery and release the button once the screen illuminates
7. Press the "Scroll" button to toggle between "S" (Lead-acid Battery) and "L" (Lithium Battery)
8. Unplug the battery and leave for five seconds before reconnecting ready for use

NB : Please note that during this process the Pin Code may also be set. If you do not wish to set a pin code please only use the Scroll button ("Set" button is used to set the pin code).

The trolley is designed to protect your battery from being fully discharged, should your battery voltage drop too low the trolley will cut the power to the motor. If this should happen you will see the battery meter flashing on screen.

M3 PRO - Starting, Stopping & Changing Speed / Using the Adjustable Distance Control

Starting and stopping the trolley and changing the speed

The speed can be adjusted while the trolley is stationary or in motion. Rotate the central button clockwise to increase the speed setting and anti-clockwise to decrease. You will see the number in the blue circle changing accordingly. The settings range from 1 (slowest) to 9 (fastest). We recommend using setting 3 for the first time. To start the trolley, simply press the button. To stop it, press the button again - there is no need to decrease the speed before stopping as it is designed to smoothly accelerate back to the required speed. You will notice the blue circle rotates when you press the button, this indicates that the trolley has been started.

Using the Adjustable Distance Control

1. Whilst stationary, select the speed at which you wish the trolley to start
2. Hold down the central 'on/off' button for a couple of seconds
3. The Distance Display will change to indicate '05' (5 yards or metres) and the letters 'ADC' will appear
4. Rotate the button clockwise to increase the distance and anti-clockwise to decrease (fig. 1)
5. Press the button down once to set the trolley off in motion
6. The distance will count down in increments of 1 yard/metre until the desired distance is reached. The trolley can be stopped at any stage by pressing the central button down once

In the unlikely event that your trolley fails to register distance whilst in ADC mode, the trolley will cut power to the motor to prevent the trolley from travelling too far. The trolley screen will flash 'dist' to indicate that this safety feature has been activated (fig.2).

The trolley can be reset by pressing the on/off button once, thereby allowing you to continue to use the trolley with ADC disabled until you are able to contact our technical support team.



Fig 1



Fig 2

Distance Readouts

There are three different distance readouts – “Distance 1”, “Distance 2” and “Total Distance”. You can toggle through them at any time by pressing the “Scroll” button. We recommend using “Distance 1” to measure your drives or particular shots during your round. To reset the reading, press the “Set” button (this must be done whilst the display shows “Distance 1” and round time is not flashing). To get an accurate reading you need to turn on your trolley and walk directly to your golf ball. We appreciate that you will not always be able to walk directly to your golf ball - however when you can it’s great fun to see how far you’ve hit it and our system measures with incredible accuracy.

You can change the distance readings from yards to meters (or vice versa) by pressing and holding the “Scroll” button for 3 seconds.

Please note the trolley will only measure distance whilst it is switched on and the motor is running (i.e. if you push the trolley along when it is switched off the distance readings will not increase). The measurements are taken from the revolutions of the axle, so please be aware that if you let your trolley run off down a hill on its own the readings will not be 100% accurate. We recommend you always walk within a few steps of your trolley and do not let it run off ahead of you.

We recommend using “Distance 2” to measure your approach shots. For example you could align your M3 with the 150 yard marker and accurately measure how far past it your ball is. Similarly to “Distance 1”, pressing the “Set” button will reset the distance at any time. Please note if you unplug the battery, “Distance 1” and “Distance 2” will be reset.

“Total Distance” cannot be reset, even if you unplug the battery. This shows how far the trolley has travelled in its lifetime. You can toggle to it by pressing the “Scroll” button. This reading is displayed in miles or km. Toggle between miles or km by holding down the “Scroll” button for 3 seconds.

Using the Lost Ball Timer

To use the lost ball timer you must first toggle through the distance readings using the 'Scroll' button until the display shows 'Distance 1' and the timer is flashing (fig. 1). To start the timer, press the 'Set' button. Once the timer has started it will stop flashing, it will then count up to 5 minutes. When it reaches 5 minutes the trolley will beep for 5 seconds. You can stop the timer before it beeps at any time by pressing the 'Set' button again.

You can test that the lost ball timer is working by doing the following:

Press and hold the 'Set' button whilst plugging in the battery - the alarm should beep twice if operating correctly. After the second beep the trolley will be on and ready to use.

Using the Round Timer

The round timer will automatically start counting when you first set off - you can reset the round timer at the start of each round. To reset the round timer, toggle through the distance readings using the 'Scroll' button until the display shows 'Distance 1' and the round time is flashing (fig. 2), then press the 'Set' button to reset the round timer.



Fig 1



Fig 2

How to use the Competition Mode

It is possible to temporarily disable the distance measuring functions using the competition mode should competition rules dictate. It is recommended that you always check competition rules before using your trolley with distance readings enabled.

To enable the competition mode the trolley must be stationary. Hold down the 'Scroll' and 'Set' buttons together for three seconds. The distance readings will be removed from the screen and the words 'COMP MODE' will appear (fig.1). To return your trolley to normal mode, simply perform the procedure again.



Fig 1

Setting the Security Pin Code

The M3 PRO also comes with the option of enabling a security feature to make the trolley unusable for potential thieves. There is no pin-code set when the trolley is manufactured but this can be set using the steps below:

1. Press and hold the "Scroll" button whilst connecting the battery to the trolley, release the button once the screen has lit up
2. Use the 'On/Off' button to choose the first number of your pin code (0-9) (fig. 1). Turn clockwise to increase the number or anti-clockwise to decrease
3. Press the "Set" button to confirm your choice
4. Repeat step 2 and 3 for each of the four digits
5. Once you have entered the fourth number and pressed the "set" button the blue circle will illuminate to indicate a valid pin code has been entered (fig. 2)
6. Unplug the battery and leave for a few seconds

When you next connect your battery, the trolley will ask you to enter the pin code that has been set. This can be done using the on/off button to select the number and the "Set" button to confirm.

IMPORTANT : Before pressing the "Set" button for the fourth time please check that the desired pin code is correct. It may be worth keeping a record somewhere of the pin code you have set, if you forget the pin code that has been entered the trolley will need to be returned to Motocaddy to be reset (this will incur a charge)



Fig 1



Fig 2

Changing the Pin Code

You can change your pin number at any time using the following steps:

1. Press and hold the "Scroll" button whilst connecting the battery to the trolley, release the button once the screen has lit up
2. First you will need to enter your existing pin where the time would usually be displayed (fig. 1)
3. Once the correct pin has been entered, you will be able to enter a new pin where the distance would usually be displayed (fig. 2)

Disabling the Pin Code

To disable the security feature, follow the procedure for changing your pin code and when you get to the stage of entering a new pin code, enter four zeros as the new code.

Once you have entered the fourth zero and pressed the "Set" button, the blue circle will illuminate to indicate the pin code has been accepted. This will return it to its factory setting.

PLEASE NOTE : When setting or changing the pin code you can also change the battery setting. If you do not wish to do this, do not press the "Scroll" button again once the screen has lit up.



Fig 1



Fig 2

Troubleshooting

In the unlikely event that your trolley develops a fault, you can be confident that your Motocaddy trolley has been designed with an easy diagnosis system and incredibly simple parts to change.

Should your trolley develop a fault, please follow the easy to use diagnosis diagrams (page 29).

Whilst running through the diagnosis diagrams it is recommended that you place your trolley in a half folded position and remove the wheels to enable easy handling.

NB : The lights on the controller box are numbered as described within the troubleshooting diagram.

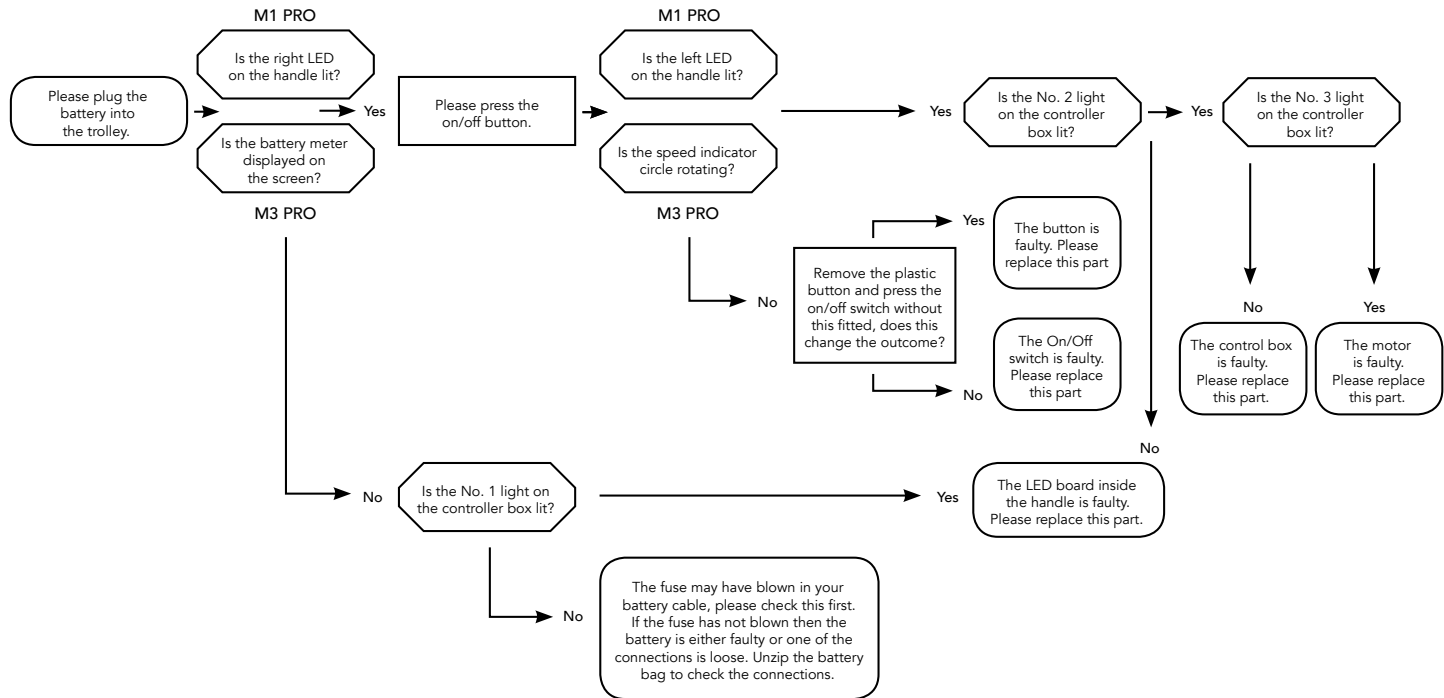
If the fault with your trolley has not been successfully diagnosed using these diagrams or you would like further help, please take your trolley/battery to one of our authorised Service Agents.

To find your nearest authorised Service Agent, please go to www.motocaddy.com/service-agent-locator or call our UK Technical team on +44 (0)1279 712370. For international customers, please contact your local distributor.

1. In the event that your trolley will not complete 18 holes after a full charge:

If this is the first time that your trolley has failed to complete 18 holes then we would suggest that you re-charge your battery as soon as possible and make sure that it has a full charge and the charger is functioning correctly. Once charged please try using the battery for one more round in case it had not charged properly before its last outing. If your battery again fails to complete 18 holes, please contact our technical support team.

2. If your trolley will not move please run through the following:



The below information is applicable to M1 PRO DHC model ONLY.

Introduction to DHC

The letters DHC stand for 'Downhill Control' and means that your trolley will maintain a controlled speed whilst travelling down hills.

Whenever you are looking to move the trolley, even if just to reposition it ready to use, always put it on a low speed setting to make it easier to steer.

Using the Parking Brake

The M1 PRO DHC is fitted with an electronic parking brake. To use this feature, the trolley must be in a stationary position. The parking brake is initiated by pressing the park button on the top of the handle.

Once activated, the screen will toggle between "P" and the current speed that is set (fig. 1). The speed setting can be adjusted whilst the parking brake is activated by turning the speed dial.

To release the parking brake, press the on/off button to start the trolley.

Pressing the park button whilst the parking brake is active will not release the brake.



Fig 1



DECLARATION OF CONFORMITY

ORIGINAL

Business Name and Full Address of Manufacturer

Motocaddy Ltd - Units 15-18 Stansted Distribution Centre,
Start Hill
Great Hallingbury

Hertfordshire
CM22 7DG

Name and Address of Authorised Representative

-

Name and Address of the Person in Community Authorised to compile the Technical File (If different to above)

-

Description of product (Commercial Name)

Motocaddy Electric Trolley

Function, Model, Type, Serial Number

Function: Electric Trolley

Model: S1/S1 PRO/S3 PRO/M1 PRO/M3 PRO/S1 DHC

Type: Motocaddy Digital Range

S1 PRO DHC/S3 PRO DHC/M1 PRO DHC
S7 REMOTE/C-TECH

Standards Used

BS EN ISO 12100 2010

Place of Declaration

Units 15-18 Stansted Distribution Centre,
Start Hill
Great Hallingbury

Hertfordshire
CM22 7DG

Date of Declaration Sunday, January 01, 2017

Declaration

I declare that the machinery fulfils all the relevant provisions of the following Directives:- Low Voltage Directive 2006/95/EC, Electromagnetic Compatibility Directive 2004/108/EC.

Person Empowered to Draw Up Declaration

Name: Tony Webb

Position: Managing Director

Signature:



Motocaddy Ltd, Units 15 - 18 Stansted Distribution Centre,
Start Hill, Great Hallingbury, Hertfordshire, CM22 7DG, United Kingdom

t: +44 (0)1279 712 370 e: info@motocaddy.com w: www.motocaddy.com



We are dedicated to protecting the environment and encourage the recycling of Motocaddy products through a free collection and disposal service. To find out more or to locate your nearest Motocaddy recycling point, please contact us through our website.

MC.17.40.002

EASILOCK™ Patent (GB) - GB2519073
USB Charging Port Patent (GB) - GB2473845
USB Charging Port Patent (AUSTRALIA) - 2010224448